

November 2009 – January 2010

Pattern Updates/Clarifications

Lace Pillow Lesson – page 13

Gauge

Books and patterns on lace knitting vary in the use of either Stockinette stitch or the lace pattern stitch to determine gauge. However, the gauge of Stockinette stitch can be very different than that of an open lace pattern utilizing the same number of stitches and rows. It is therefore recommended that the knitter complete a gauge swatch in the specified lace pattern and not Stockinette stitch. It is also recommended that the swatch be blocked as it would for the finished product.

Figure 1 shows a Stockinette stitch swatch and a lace pattern swatch side by side. There are the same number of stitches and rows on both swatches. Note that the swatches are “bordered” with 2 rows and 2 right and left side stitches of garter stitch. This frame makes it easier to measure accurate gauge on pattern stitches only. For the swatches shown in Figure 1, gauge was obtained on the Stockinette and lace portions. Each swatch has 26 stitches and 48 rows between the borders.

The gauge for the Stockinette swatch is 22 stitches/32 rows = 4 inches, and the gauge of the lace pattern swatch is 20 stitches and 28 rows = 4 inches. **There is a difference of 2 stitches to 4 inches and 4 rows to 4 inches between the two swatches.** If the Stockinette swatch were utilized as the gauge measurement, 55 stitches would need to be cast on to obtain 10 inches. With the lace pattern, however, only 50 stitches are needed to obtain the same 10 inch measurement. If 10 inches were needed in length, 80 rows would be knit in Stockinette and 70 rows in lace pattern. These differences are significant when planning and knitting an entire lace piece or garment.

Wasp Wing Cardigan – page 31

There are typographical errors in the schematics on page 31. On the schematic for the Front, the length should be **27 (27, 27)**. The same as the back.

Additional corrections continued on next page.....

Dirus Tam – page 42

Hat

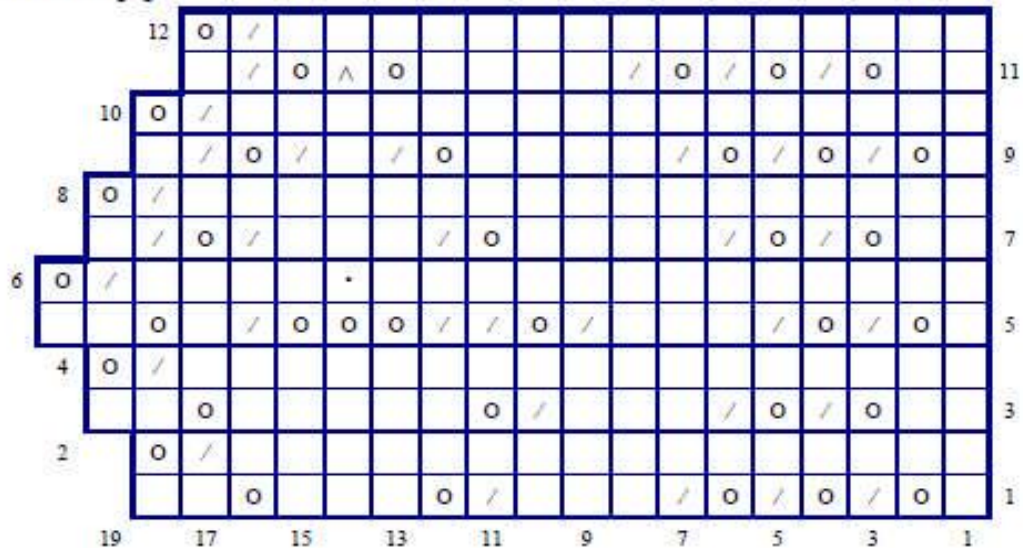
Set up round for dec on rnd 28 as follows:

Remove marker, k2, replace marker, k14, DVD, ***k15, DVD; rep from *** around, k1.

Double Bordered Irish Lace Scarf – page 44

Charts

Irish Lace Edging



Double Herringbone Faggot



Key

	- knit (RS and WS)
•	- purl
○	- yarn over
/	- knit 2 together
∧	- sl 1, k2tog, pss0